



2023
GENESIS G70





WELCOME TO THE LUXURY OF PERFORMANCE

A few short years ago, we created Genesis to reflect a new kind of luxury that is emerging at the intersection of design and technology. Where luxury isn't a feature, but a feeling – the direct effect of a seamless interaction with everything that surrounds you.

In your G70, you will experience marvels large and small, profound and subtle. It's in the confidence you feel from our innovative suite of driver-assist safety features. It's in the convenience you enjoy from our connected car smartphone apps. And the pleasure you will take in the performance of your G70 – from the thrilling response of its turbocharged engine and agile suspension to the precision of its audio and navigation systems.

WHERE ELEGANCE GETS ATHLETIC

The G70 shares a visual language with all Genesis vehicles. Our designers call it Athletic Elegance. It starts with a bold Crest Grille flanked by Two-Line Headlamps, then runs along the G70's broad shoulders to the Two-Line Rear Combination Lamps that form another signature detail of Genesis Design.

If the design of the G70 enhances your perceptions about Genesis, so will this performance metric: In its 2022 U.S. Vehicle Dependability Study, J.D. Power ranked Genesis #1 in long-term dependability among luxury brands.¹

Even standing still, you can sense the G70's fluid power and quick reflexes. In motion, available All Wheel Drive is calibrated for razor-sharp cornering, while an array of intuitive and powerful technologies help the G70 earn the highest safety ratings in the industry.

Inside, a large infotainment display punctuates the car's performance-minded luxury. Dynamic Voice Recognition responds to your naturally spoken commands,² and an available Genesis Digital Key turns your compatible smart-phone into a magic wand that helps your G70 welcome you with open doors.³





TAKE A GOOD LOOK – YOU’LL
RARELY SEE A G70 STANDING STILL



DRIVE YOURSELF HAPPY

The G70 2.0T knows the feeling you crave from a performance luxury sedan – the sublime fusion of car and driver. Its 2.0L Turbo GDI 4-Cylinder Engine feeds up to 252 horsepower through an 8-speed electronic automatic transmission – which you can shift via paddle shifters on the steering wheel.⁴

Rev-matching helps ensure engine RPMs are automatically adjusted to match the optimum speed of the next gear during downshifts. So the balance and thrust of power you experience is seamless.

Intelligent Drive Mode lets you select your preferred driving dynamic: Comfort, Smart, Eco, Sport, Sport+ or Custom. Steering, stability control, transmission and throttle are all recalibrated to your chosen mode. Select Sport+ mode, and your 2.0T unlocks a more aggressive shift pattern and sharper steering response. In Smart mode, the powertrain and chassis responses are auto-programmed based on past driving inputs.

You can even adjust the sonic effects of your G70 2.0T's engine. Active Sound Design technology enhances engine sounds with acoustics generated by the audio system.

2.0L TURBO GDI 4-CYLINDER ENGINE

252 HP
Maximum Output⁴

260 LB-FT
Maximum Torque⁴

8-SPEED
Electronic Automatic

POWER DEMANDS CONTROL

In the G70 3.3T, you'll command up to 365 horsepower and 376 lb-ft of torque from an all-aluminum 3.3L Twin-Turbo GDI V6 paired to an 8-speed electronic automatic transmission.⁴

To help translate power into performance, advanced traction technologies including Launch Control maximize the G70's breathtaking acceleration and stability off the line.⁵ For optimal traction and agility through corners, the 3.3T's available All Wheel Drive uses Dynamic Torque Vectoring Control to strategically apply inner rear-wheel braking. And with Intelligent Drive Mode, selecting Sport or Sport+ engages the 3.3T's advanced traction control settings and turns on Launch Control automatically.

Both of these drive modes activate the G70's available Variable Exhaust Valve System, which nets three additional horsepower and tunes the exhaust sound for a deep, throaty growl. The G70 3.3T knows how to deliver excitement, and do so without sacrificing comfort. Steer it through corners, and the ride remains smooth and supple – even while the handling is firm with minimal body roll.

3.3L TWIN-TURBO GDI V6 ENGINE

365 HP
Maximum Output⁴

376 LB-FT
Maximum Torque⁴

8-SPEED
Electronic Automatic



01 LIMITED-SLIP DIFFERENTIAL

G70 3.3T drivers can opt for a Limited-Slip Differential that helps improve traction on wet and snowy roads by sending more torque to the wheel with more grip. Exceptional response and stability in corners are also enhanced by distributing torque to the inner wheels to counter centrifugal forces.

02 BREMBO® BRAKING SYSTEM

Colorful calipers – in your choice of red or gray – signal you've chosen the available Brembo® high-performance brakes.⁶ They are equipped with larger ventilated discs and 4-piston/2-piston (front/rear) monobloc units that deliver powerful, fade-resistant stopping force.

03 ELECTRONICALLY CONTROLLED SUSPENSION

Optional on the 3.3T, this suspension computes real-time data from an array of sensors in the front and rear shocks, then reacts instantly to optimize ride comfort and handling control. Ride control settings can also be set by you, the driver.



CONFIDENCE IN EVERY MOVE YOU MAKE

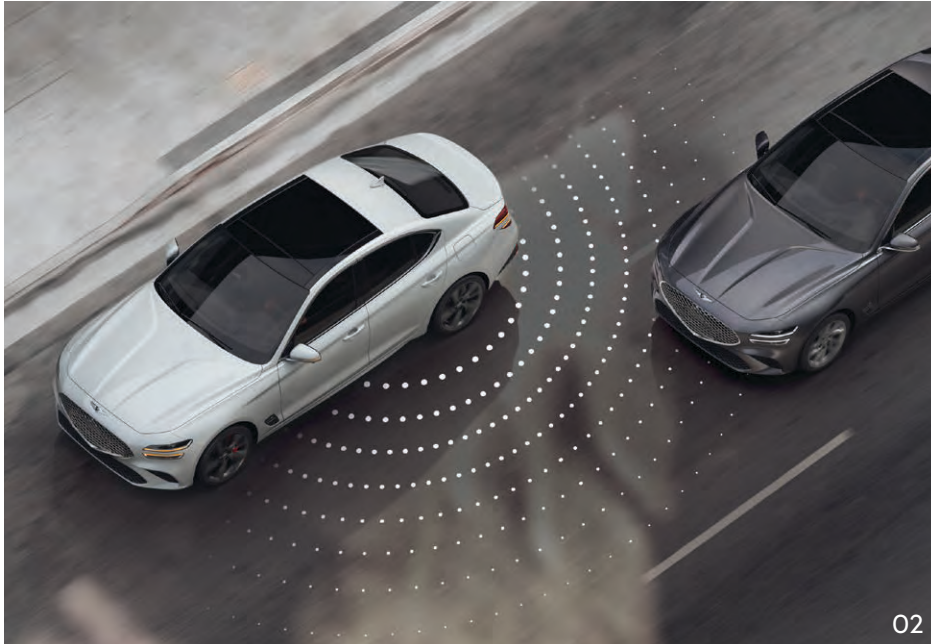
The ultimate aim of any serious performance sedan is to instill confidence in its driver. Along with the precise response of its engine, steering and braking, it should offer the reassurance that you and your passengers are protected by the most advanced safety technologies.

The Genesis G70 clearly does, with occupant protection and accident-avoidance features that routinely earn *IIHS Top Safety Pick+* honors.⁷ A Rearview Camera with Dynamic Guidelines and an available Parking Distance Warning feature are among the battery of convenience and safety technologies that work seamlessly to alert and assist the G70 driver.⁸ Every G70 also comes standard with a segment-first front center airbag.⁹

The confidence you feel is also enhanced by sophisticated Smart Cruise Control with Stop & Go features that can reduce your speed when entering a curve¹⁰ and adjust for changing speed limits automatically based on data from the navigation system.¹¹



2022 Genesis G70



01 FORWARD COLLISION-AVOIDANCE ASSIST
The G70 alerts its driver to potential collisions with vehicles, pedestrians or cyclists detected in front of the car and applies braking automatically if needed to help avoid a collision.¹² It can also assess the risk of colliding with oncoming traffic while you are turning left in an intersection, and bring your G70 to a stop if necessary.¹³

02 BLIND-SPOT VIEW MONITOR AND BLIND-SPOT COLLISION-AVOIDANCE ASSIST
Activate your turn signal, and an available Blind-Spot View Monitor displays video from the G70's side-view camera in the instrument cluster.¹⁴ Like an extra set of eyes when you approach the line markings for your lane change, the G70 engages differential braking automatically to help avoid collisions if a vehicle is detected in the rear blind spot.¹⁵

03 REAR CROSS-TRAFFIC COLLISION-AVOIDANCE ASSIST
Backing out of a parking space and wondering if it's safe? The G70 comes equipped with sensors that help detect vehicles approaching from the side while you are exiting a parking space in reverse gear.¹⁶ If necessary, emergency braking is applied to help avoid collisions with cross traffic from the rear.

04 LANE FOLLOWING ASSIST AND HIGHWAY DRIVING ASSIST
Lane Following Assist helps keep you centered in your lane by scanning lane markers and the path of the vehicle ahead.¹⁷ Another feature, Highway Driving Assist, helps keep you centered in your lane at a safe cruising distance from the vehicle in front and can automatically adjust the cruise control for changing speed limits.¹⁸

05 SURROUND VIEW MONITOR
Time to park? An available Surround View Monitor helps take the stress out of maneuvering into and out of tight spaces. You can navigate your G70 easily, thanks to a display that lets you view multiple angles of your car's perimeter.¹⁹



CRAFTED TO CONNECT

Like a finely crafted timepiece, the control knobs in the GV70's center console reward your touch with the exquisite feel of precisely knurled bezels.

COMFORT DEEP-SEATED IN CRAFTSMANSHIP

Genesis designers have been laser-focused on how it feels to sit in your G70. To surround yourself with exquisitely crafted interior appointments that deepen your connection with every interaction. To touch control knobs cut with a technique called knurling that forms jewel-like facets around the edges. And to relax in the comfort and support of available heated and ventilated seats clad in quilted Nappa leather, sewn with double-stitched seams and trimmed with piping.

Open the door of your Genesis G70, and you'll enter a cabin filled with a level of refinement usually reserved for cars in the luxury class above. Available amenities include a Heated Steering Wheel, an expansive Sunroof and a 16-way Power Driver Seat with Power Side Bolsters and Cushion Extension.

So go ahead, get comfortable with the idea of being comfortable.



IT'S LIKE HIRING A PERSONAL ASSISTANT

The G70's performance isn't the only way it satisfies you. From the moment you approach your Genesis, you're greeted by touch-type sensors on the front door handles that grant instant access to spacious seating areas.

Once inside, the ability to custom-tailor your G70 driving experience is literally at your fingertips. An 8" Color LCD Multi-Information Display lets you personalize the car's

instrument cluster, while an available Head-up Display projects speed, navigation and safety alerts onto the 3.3T's windshield in fighter-jet fashion. Large gauges also facilitate at-a-glance decision making at speed.

Of course, it won't take long to set those dials in motion. After all, the real quality time begins the instant you start your G70's engine.



GENESIS DIGITAL KEY

A Genesis Digital Key is available for unlocking your G70's doors and starting the engine using your smartphone or NFC Card Key.³ It instantly recalls driver profile preferences like your driver's seat position, audio/navigation presets and more. At the press of a button, you can also share your digital key with any family member you choose.



HANDS-FREE SMART TRUNK WITH AUTO OPEN

Stand within three feet of the car's trunk for at least three seconds, and a Hands-Free Smart Trunk with Auto Open feature recognizes your key fob, then pops the trunk lid open.²⁰ Inside, you will find a cargo area that expands beyond the trunk thanks to 60/40 split-folding rear seats.



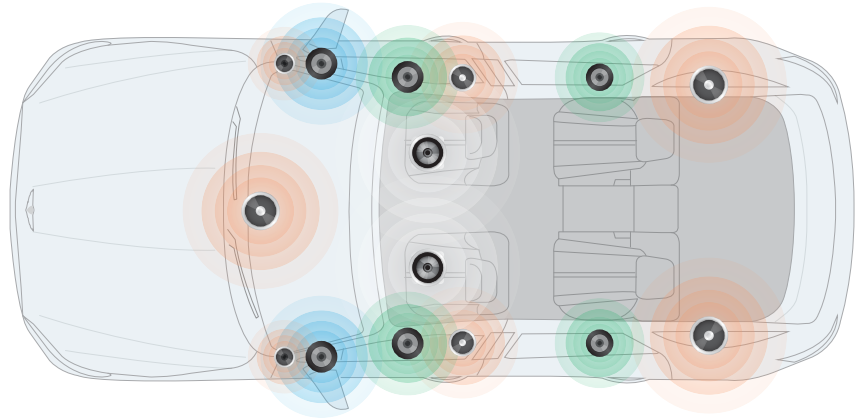
DUAL AUTOMATIC TEMPERATURE CONTROL AND WIDE SUNROOF

Slip behind the wheel of your G70, and the ability to tailor your driving experience is at your fingertips. Dual Automatic Temperature Controls let both the driver and front-seat passenger customize their climate, and a Wide Sunroof is available for ushering sunbeams and stars inside.

A SOUND STUDIO OF YOUR VERY OWN

With an 11-channel digital amplifier powering 15 premium speakers, including a pair of subwoofers located beneath the front seats, the G70's available Lexicon® Premium Audio System is something you'll feel – not just hear.²¹

QuantumLogic® Surround technology identifies and re-authors individual voices and instruments to create a dynamic sound experience that enhances whatever you're enjoying: SiriusXM® Satellite Radio,²² HD Radio,[™] Apple CarPlay®/Android Auto™ or Bluetooth® streaming. It's all controlled through a 10.25" HD touchscreen display with a convenient split-screen feature.



APPLE CARPLAY AND ANDROID AUTO

The music files downloaded to your smartphone are prized possessions, right? Playing your songs through your G70's audio system is easy, thanks to Apple CarPlay or Android Auto.²³ Wireless device charging is available to ensure your phone's battery stays juiced during road trips.²⁴



DYNAMIC VOICE RECOGNITION

Activate climate controls, select SiriusXM channels, open a window and more using a natural, conversational tone of voice instead of truncated voice commands. Press a button on the steering wheel, and you can ask your G70 "How is Amazon's stock doing today?" or "Will it rain in Manhattan?" and quickly hear a response.²

CONNECTED ROUTING

Up on the center console's large 10.25" HD touchscreen, the G70's Premium Navigation System uses a feature called Connected Routing to deliver faster cloud-based driving directions with the latest traffic and road conditions.²⁵ The software in the G70's head unit that drives this intelligence can be updated over the air automatically.²⁶

GENESIS CONNECTED SERVICES



With the Genesis Intelligent Assistant® app on your mobile device, you can remotely check to see if you have left your G70's doors unlocked or a window open – even view an overhead snapshot of your G70 and its surroundings.²⁷

Want your G70's cabin to be the perfect temperature when you enter? From the comfort of your couch or office, your Genesis app or Amazon Echo®/Google Home™ device lets you remotely start your G70 and activate the climate controls.²⁸ The app also lets you check the fuel level and includes a valet alert to help you keep tabs on your car.

Lost in a sea of cars outside of a shopping mall or long-term parking lot at the airport? We've all been there. Thankfully, the Genesis app can locate your car using your smartphone. You can also use your phone to pinpoint your next destination and send it to your G70's navigation system before you get behind the wheel.²⁹

It's all part of Genesis Connected Service's wide range of remote, safety and car care features that include monthly vehicle health reports, maintenance reminders, automatically calling for assistance in an emergency,³⁰ and much more.³¹ For information on all of the services available to G70 owners, visit genesis.com.



GENESIS EXPERIENCE

Our thoughtfully crafted suite of owner benefits is designed to enhance not just the way you drive, but also the way you live. It reflects our profound commitment to meeting your needs and wants precisely. And while we can't make more of it, the time-saving features of the Genesis Experience will help you spend your time where it matters most.



COMPLIMENTARY SERVICE VALET

You may never set foot in our service center. With our Genesis Service Valet (complimentary for 3 years or 36,000 miles), we'll perform a remote diagnostic check, pick up your vehicle, send a Courtesy Loaner Vehicle and return your G70 when the scheduled maintenance or warranty repair is complete.³²

COMPLIMENTARY SCHEDULED MAINTENANCE

Enjoy a worry-free Genesis ownership experience with Complimentary Scheduled Maintenance for 3 years or 36,000 miles, whichever comes first. Complimentary oil changes are also included with your normally scheduled maintenance appointments at a Genesis service center.³³

24/7 ENHANCED ROADSIDE ASSISTANCE

Peace of mind is another essential luxury. Should your travel plans take an unexpected turn, five-year complimentary Roadside Assistance provides tire changes or transportation to the nearest Genesis retailer. Reimbursement for an overnight stay is included if needed.³⁴

GENESIS CONNECTED SERVICES

Every new G70 includes a complimentary subscription for Genesis Connected Services. It's an exclusive suite of safety, car care, guidance and remote features that help keep you connected to your digital life and the things you need on the go.³¹

SIRIUSXM ALL ACCESS SATELLITE RADIO

Complimentary for your first three months, SiriusXM® All Access offers one of the widest varieties of entertainment at your fingertips. Enjoy every channel available on your satellite radio – including personalized online stations powered by Pandora® – and listen in your G70 or on your computer, smartphone or tablet with the SiriusXM app.²²

NAVIGATION AND MULTIMEDIA UPDATES

To ensure you're accessing up-to-date driving directions, your G70's navigation system includes annual map updates – complimentary for three years during routine maintenance visits with Genesis.³⁵ Over the Air Updates are available through Genesis Connected Services.²⁶

G70 FEATURES

POWERTRAIN TECHNOLOGY					
2.0L Inline 4 Turbo GDI (252 HP / 260 lb-ft) ⁴	•	–			
3.3L Twin-Turbo V6 (365 HP / 376 lb-ft) ⁴	–	•			
8-speed Automatic Transmission	•	•			
MacPherson Strut Front & Multi-Link Rear Suspension	•	•			
Electronic Parking Brake	•	•			
Ventilated Front & Rear Disc Brakes	•	•			
Drive Mode Select	•	•			
Rack-mounted Motor-Driven Power Steering (R-MDPS)	•	•			
R-MDPS with Variable Gear Ratio Steering	–	•			
ADVANCED SAFETY TECHNOLOGY			2.0T	3.3T	
Forward Collision-Avoidance Assist	•	•			
Lane Keeping Assist	•	•			
Lane Following Assist	•	•			
Blind-Spot Collision-Avoidance Assist	•	•			
Rear Cross-Traffic Collision-Avoidance Assist	•	•			
Highway Driving Assist	•	•			
Smart Cruise Control with Stop & Go	•	•			
Driver Attention Warning	•	•			
High Beam Assist	•	•			
Rearview Camera with Dynamic Guidelines	•	•			
Rear Occupant Alert	•	•			
Safe Exit Warning	•	•			
Rain-Sensing Wipers	◦	•			
Tire Pressure Monitoring System and Temporary Spare	•	•			
8 Airbags	•	•			
EXTERIOR			2.0T	3.3T	
19-inch Alloy Wheels	•	•			
Hands-Free Smart Trunk with Auto Open	•	•			
Heated Outside Mirrors with LED Turn Signal Indicators	•	–			
Power-Folding ECM Outside Mirrors with Genesis Logo Puddle Lamps	◦	•			
Two-Line Headlamps and Rear Combination Lamps	•	•			
INTERIOR & CONVENIENCE					
			Leatherette Seating Surfaces		
			Leather Seating Surfaces		
			Leatherette-Wrapped Lower Instrument Panel		
			Aluminum Trim		
			Power Driver's Seat with 4-Way Power Lumbar		
			Power Front Passenger Seat		
			Power Front Passenger Seat with 4-Way Power Lumbar		
			Heated Front Seats		
			Integrated Memory System		
			Manual Telescopic Steering Wheel		
			Power Telescopic Steering Wheel		
			Passenger Walk-in Device		
			Auto-Dimming Inside Mirror with HomeLink®		
			Dual Automatic Temperature Control		
			Proximity Key with Push Button Start		
			60/40 Split Folding Rear Seats		
			MULTIMEDIA & TECHNOLOGY		
			2.0T	3.3T	
			Navigation System with 10.25" Screen		
			8" Digital Cluster + Analog Gauges		
			AM/FM/SiriusXM® Radio/HD Radio™		
			Apple CarPlay® and Android Auto™		
			Genesis Connected Services		
			Bluetooth® Hands-Free Phone & Audio Streaming System		
			4 USB Ports		
			12V Power Outlet		

• Standard ◦ Optional – Not Available

OPTION PACKAGES



G70 2.0T SPORT PRESTIGE

2.0T Standard features plus:

- + 19-inch Sport Alloy Wheels
- + Leather Seating Surfaces
- + Dark Chrome Grille & Daylight Opening Trim
- + Sport Aluminum Trim / Alloy Pedals
- + Wide Sunroof
- + Lexicon® Premium Audio
- + Ventilated Front Seats
- + Parking Distance Warning – Forward & Reverse
- + Rain-Sensing Wipers
- + Wireless Device Charging
- + Power-Folding ECM Outside Mirrors with Genesis Logo Puddle Lamps
- + Power Telescopic Steering Wheel
- + Integrated Memory System
- + Front Passenger Seat 4-Way Power Lumbar
- + Passenger Walk-in Device
- + Acoustic Front Door Glass



G70 3.3T SPORT ADVANCED

3.3T Standard features plus:

- + 19-inch Sport Alloy Wheels
- + Variable Exhaust Valve System
- + Dark Chrome Grille & Daylight Opening Trim
- + Sport Aluminum Trim
- + Wide Sunroof
- + Lexicon® Premium Audio
- + Ventilated Front Seats
- + Power Driver's Seat Bolsters & Cushion Extension
- + Parking Distance Warning – Forward & Reverse
- + Wireless Device Charging
- + Genesis Digital Key
- + Alloy Pedals
- + Acoustic Front Door Glass



G70 3.3T SPORT PRESTIGE

3.3T Sport Advanced features plus:

- + Electronically Controlled Suspension
- + Brembo® Braking System
- + Limited-Slip Differential
- + Head-Up Display
- + Nappa Leather Seating Surfaces
- + Microfiber Suede Headliner & Pillars
- + Surround View Monitor
- + Blind-Spot View Monitor
- + Power Trunk
- + Heated Steering Wheel

G70 ALL WHEEL DRIVE OPTION

All trim levels add:

- + All Wheel Drive System
- + Heated Steering Wheel (standard on 3.3T Sport Prestige)



EXTERIOR COLORS

ALTA WHITE



UYUNI WHITE



SIBERIAN ICE*



SAVILE SILVER



MAKALU GRAY



VIK BLACK



CAPRI BLUE



TASMAN BLUE



MALLORCA BLUE*



HALLASAN GREEN



HAVANA RED

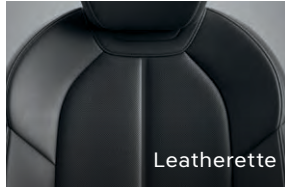


*Color will be discontinued December 2022



INTERIORS & WHEELS [2.0T & 3.3T NON-SPORT]

OBSIDIAN BLACK

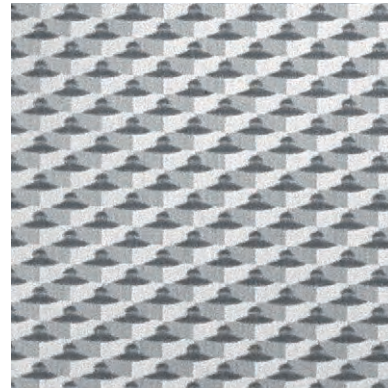


Leatherette

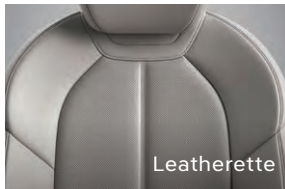


Leather

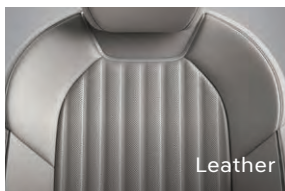
ALUMINUM TRIM



OBSIDIAN BLACK / SANDSTORM GRAY



Leatherette



Leather



19" MACHINED FINISH DARK GRAY

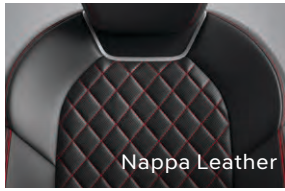
- 2.0T STANDARD
- 3.3T STANDARD
- Front: 19 x 8.0J Rear: 19 x 8.5J
- Front: 225/40R19 Summer Tires (RWD)
- Rear: 255/35R19 Summer Tires (RWD)
- AWD: All-Season Tires

INTERIORS & WHEELS [2.0T SPORT PRESTIGE & 3.3T SPORT]

OBSIDIAN BLACK / RED ACCENTS

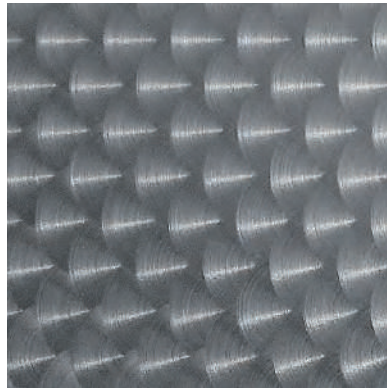


Leather

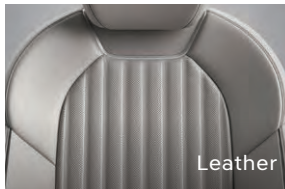


Nappa Leather

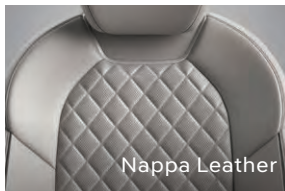
SPORT ALUMINUM TRIM



OBSIDIAN BLACK / SANDSTORM GRAY



Leather



Nappa Leather



19" DARK SPUTTERING

- 2.0T SPORT PRESTIGE
- 3.3T SPORT ADVANCED & SPORT PRESTIGE
- Front: 19 x 8.0J Rear: 19 x 8.5J
- Front: 225/40R19 Summer Tires (RWD)
- Rear: 255/35R19 Summer Tires (RWD)
- AWD: All-Season Tires

OBSIDIAN BLACK / SEVILLA RED – LAUNCH EDITION



Nappa Leather

SPECIFICATIONS

EXTERIOR

Wheelbase	111.6 in
Length	184.4 in
Width (excluding mirrors)	72.8 in
Height	55.1 in
Minimum Ground Clearance	5.1 in

FUEL ECONOMY (EPA ESTIMATES)

G70 RWD 8 A/T (city/highway/combined) ³⁶	21/31/25 MPG	2.0T	3.3T	18/27/21 MPG
G70 AWD 8 A/T (city/highway/combined) ³⁶	20/28/23 MPG			17/26/20 MPG



INTERIOR

Headroom (without sunroof) – front/rear	39.8/36.9 in
Legroom – front/rear	42.6/34.8 in
Shoulder Room – front/rear	56.3/54.6 in

VOLUME

Passenger Volume	95.9 cu ft
Cargo (Trunk) Volume	10.5 cu ft
Total Interior Volume	106.4 cu ft



GENESIS BRAND WARRANTY

POWERTRAIN LIMITED WARRANTY

10 YEARS / 100,000 MILES³⁷

NEW VEHICLE LIMITED WARRANTY

5 YEARS / 60,000 MILES³⁸

ANTI-PERFORATION WARRANTY

7 YEARS / UNLIMITED MILES³⁸

FOOTNOTES

¹Genesis received the fewest reported problems in its segment in the J.D. Power 2022 U.S. Vehicle Dependability Study based on 2019 models. See [jdpower.com/awards](https://www.jdpower.com/awards) for details. ²Dynamic Voice Recognition varies by unit. Speak in a normal voice and minimize background noise for best results. See Owner's Manual for details and limitations. ³Near Field Communication digital smartphone key requires a compatible Android smartphone and an appropriately equipped G70 vehicle. Not all Android devices are compatible. The Genesis G70 must be equipped with smart key with push button start, wireless device charging and Audio Video Navigation System 5.0 (or newer) or Display Audio 2.0. Lock/unlock functionality works on the front doors only. Features and specifications subject to change. See your Owner's Manual or visit your local Genesis Retailer for details and limitations. ⁴Horsepower and torque ratings with premium fuel. ⁵Only use Launch Control feature on a closed race track. Never use Launch Control on public roads. See Owner's Manual for details and limitations. ⁶Brembo is a registered trademark of Brembo SpA. ⁷To qualify for 2022 TOP SAFETY PICK+, a vehicle must earn good ratings in the driver-side small overlap front, passenger-side small overlap front, moderate overlap front, side, roof strength and head restraint tests. It also must earn an advanced or superior rating for vehicle-to-vehicle and vehicle-to-pedestrian front crash prevention and come with standard acceptable- or good-rated headlights. For details visit www.iihs.org. ⁸Parking Distance Warning may not function correctly if one or more of the parking sensors is damaged, dirty or covered, or if weather conditions (heavy rain, snow or fog) are interfering with sensor operation. This driver assistance system is not a substitute for safe driving. See Owner's Manual for details and limitations. ⁹Claim based on comparison of specifications on manufacturer websites. ¹⁰Auto Curve Slowdown is for highway use only and works in conjunction with Smart Cruise Control with Stop & Go or Highway Driving Assist, and only when navigation map data is available. It will not work under all circumstances. Driver remains responsible for driving at posted speeds. See Owner's Manual for details and limitations. ¹¹Smart Cruise Control with Stop & Go (SCC) is not a collision-avoidance or warning device. SCC is for highway use only and should not be used in poor weather, heavy or varying traffic, or on winding or slippery roads. The driver remains responsible to slow or stop the vehicle to avoid a collision. SCC initiates a full stop when the traffic ahead stops and reengages if the vehicle ahead moves forward within 3 seconds. When the driver sets Highway Driving Assist to a speed matching that of the current road's speed limit, the Auto Set function is activated, and the vehicle's cruise control speed automatically changes to match changes in posted speed limits (if speed limit is available in navigation system data). See Owner's Manual for details and limitations. ¹²Forward Collision-Avoidance Assist (FCA) with Pedestrian and Cyclist Detection helps detect pedestrians and cyclists, but not in all conditions. FCA is designed to assist drivers to avoid, or reduce the severity of, collisions with cars, cyclists or pedestrians that have slowed or stopped in front of them. The system is not designed to detect certain stationary objects such as trees or poles, and may not detect all vehicles, pedestrians or cyclists under certain road, weather and vehicle conditions. It is a supplemental assist and does not replace the need for extreme care and attention by the driver. FCA may not stop the vehicle completely and will not avoid all collisions. The driver is responsible for being attentive and maintaining control of the vehicle, and should not wait for the system's alerts before braking as there may not be sufficient time to brake safely. See Owner's Manual for details and limitations. ¹³Junction Turning helps the driver avoid collisions involving turning left at an intersection by applying the opposing front brake only when an oncoming vehicle is detected in the opposing lane. There are limitations to the function, detection, range and clarity of the system. Junction Turning may not function correctly if one or more of the sensors is damaged, dirty or covered, or if weather conditions (heavy rain, snow or fog) are interfering with the sensor operation. It will not prevent loss of control. This driver assistance system is not a substitute for safe driving. See Owner's Manual for details and limitations. ¹⁴The Blind-Spot View Monitor (BVM) assists the driver in changing lanes by providing a live view of the blind spots on either side of the vehicle and an audible alert if another vehicle is detected. Turn signal must be activated, and other system limitations apply. Do not rely exclusively on BVM. It is the driver's responsibility to be aware of the surroundings and ensure it is clear before changing lanes or directions. See Owner's Manual for details and limitations. ¹⁵Blind-Spot Collision-Avoidance Assist (BCA) assists the driver by warning of other cars in the rear blind-spot region. There are limitations to the function, range, detection and clarity of the system. BCA may not operate if sensors are obscured in any way. Do not rely exclusively on BCA – it is a supplemental system, and the driver must be attentive and exercise caution when driving. It is important to always signal, look over your shoulder and through your mirrors before changing lanes. See Owner's Manual for details and limitations. ¹⁶Rear Cross-Traffic Collision-Avoidance Assist (RCCA) is designed to notify drivers of approaching cross traffic behind their vehicle. When another vehicle is detected while you are backing out of a parking spot, it provides audible and visual display warnings and applies braking if it senses a collision is imminent. RCCA is active when the vehicle is in reverse gear and backing at a speed less than 6 mph. It only engages during the first activation of reverse gear from park and may not detect all vehicles, depending on the size, angle, distance and speed of the other vehicle. Never rely exclusively on RCCA. See Owner's Manual for details and limitations. ¹⁷Lane Following Assist (LFA) will not work under all circumstances and will

not prevent loss of control. LFA is a supplemental assist and does not replace the need for extreme care and attention by the driver. LFA uses a camera in the upper windshield area, and it is imperative this area be free of blockage such as stickers, dirt, snow, tinting material, markings and labels. Avoid putting objects on the dashboard that may reflect light or images onto the system camera area. See Owner's Manual for details and limitations. ¹⁸Highway Driving Assist (HDA), when used in conjunction with Lane Following Assist and Smart Cruise Control, is for highway use only and can help keep the vehicle centered in its lane while maintaining a safe distance from the vehicle ahead when the lane markings are clearly visible on the road. It should not be used in poor weather, heavy or varying traffic, or on winding or slippery roads. HDA will not work under all circumstances and will not prevent loss of control. Driver remains responsible to slow or stop the vehicle to avoid a collision. See Owner's Manual for details and limitations. ¹⁹The Surround View Monitor's Surround View Camera System (SVCS) is a parking support system. SVCS cannot completely eliminate blind spots, may not detect every object and does not warn of moving objects. Always check your surroundings before moving your vehicle. Remote image capture requires an active Genesis Connected Services account. ²⁰The smart trunk will open when your Proximity Key is within 40 inches of the detection area for at least 3 seconds. Radio transmitters and other vehicle smart keys may interfere with the normal operation of this feature. See Owner's Manual for details and limitations. ²¹Lexicon and QuantumLogic are registered trademarks of HARMAN International Industries, Inc. ²²All SiriusXM services require a subscription sold separately, or as a package, by SiriusXM Radio Inc. after the trial period has elapsed. The subscription plan you choose will automatically renew, and you will be charged according to your chosen payment method at then-current rates. Fees and taxes apply. To cancel, you must call SiriusXM at 1-866-635-2349. See SiriusXM Customer Agreement for complete terms at [siriusxm.com](https://www.siriusxm.com). All fees and programming subject to change. Satellite and outside-the-car lineups vary slightly. Sirius, XM, SiriusXM and all related marks and logos are trademarks of SiriusXM Radio Inc. ²³Apple CarPlay works with iPhone 5 and later models running the latest version of iOS 7.1 and above. Apple is a registered trademark of Apple Inc. Android Auto requires the Android Auto app on Google Play and an Android-compatible smartphone running Android 5.0 Lollipop or higher. Google, Android, Android Auto, Google Play and other marks are trademarks of Google Inc. ²⁴Qi wireless charging function is based on smartphone compatibility and/or specific accessory cases. ²⁵Connected Routing helps drivers access the latest traffic and road conditions. It requires an active subscription to Genesis Connected Services and a wireless connection. See Owner's Manual for details and limitations. ²⁶Over the Air Updates require a Genesis Connected Services subscription. ²⁷Remote features are subject to adequate cellular coverage, signal strength and battery power, and only available in the 50 United States. You must be an active subscriber or within the initial free-trial period to receive Genesis Connected Services. Remote image capture requires Surround View Monitor and an active Genesis Connected Services account. ²⁸Amazon, Alexa and all related logos and motion marks are trademarks of Amazon.com, Inc. or its affiliates. Google Home and Google Assistant are trademarks of Google Inc. ²⁹Requires active Genesis Connected Services subscription with Guidance package. ³⁰Genesis Connected Services agents will contact existing emergency service responders. ³¹Genesis Connected Services require an active subscription agreement subject to the Connected Services Terms and Conditions. Complimentary subscription term starts from the new vehicle date-of-first-use and is available for new 2023 model-year vehicle purchases and leases, as well as transferable to subsequent owners subject to the Terms and Conditions. Only use Genesis Connected Services and corresponding devices when safe to do so. Cellular and GPS coverage is required. Features, specifications, and fees are subject to change. For more on details and limitations, visit [genesis.com](https://www.genesis.com) or an authorized retailer of Genesis branded products. ³²Genesis Service Valet is available for original purchaser of the vehicle from an Authorized Genesis Retailer during the scheduled maintenance period which includes scheduled maintenance and normal wear, parts replacement or warranty repairs to your vehicle for 3 years or 36,000 miles, whichever comes first. Coverage area varies by retailer. Charges and fees may apply. Contact your Genesis Retailer for details. ³³Genesis Complimentary Maintenance is for 2023 model-year vehicles for factory-recommended scheduled maintenance for 3 years/36,000 miles, whichever comes first. Ownership limitations and exclusions may apply. See your Genesis Retailer for details. ³⁴Genesis Roadside Assistance is a limited and complimentary service for 5 years/unlimited miles from the date of first use. Coverage is effective from the date the vehicle is delivered to the first retail buyer, or otherwise put into service (in-service date), whichever is earlier. Mileage and ownership limitations may apply. See your Genesis Retailer for details. ³⁵Multimedia and Navigation Map Care updates are available annually for 2023 model-year vehicles for 3 years after purchase with a regularly scheduled maintenance appointment. Availability timing of software updates may vary. Ownership limitations may apply. See your Genesis Retailer for details. ³⁶EPA estimates for comparison only. Actual mileage will vary with options, driving conditions, driving habits and the vehicle's condition. ³⁷Powertrain Limited Warranty available for original retail owner only. See Genesis retailer for Limited Warranty details. ³⁸For further details and limitations regarding the Genesis Brand Warranty, contact your Genesis retailer or visit [genesis.com](https://www.genesis.com).

General Disclaimer: While the information contained in this brochure was correct at the time of printing, specifications and equipment can change. Feature comparisons based on competitor information available at the time of printing. No warranty or guarantee is being extended in this brochure, and Genesis reserves the right to change product specifications and equipment at any time without incurring obligations. Some vehicles are shown with optional equipment. Specifications apply to U.S. vehicles only. Please contact your Genesis retailer for current vehicle specifications or details on any of the programs or services listed here.



THE APEX OF SPORTING
LUXURY – INQUIRE WITHIN

